



Manchester Rusk Company Ltd
Flava House
Beta Court
Harper Road
Sharston
Manchester M22 4XR
Tel: 0161 945 3579

SECTION 1: CONTACT DETAILS

ADDRESS

Manchester Rusk Company Ltd
Flava House
Beta Court
Harper Road
Sharston
Manchester
M22 4XR

TELEPHONE

0161 945 3579

FAX

0161 946 0299

TECHNICAL CONTACT

NAME: Clare Joynson

TITLE: QA Supervisor

SALES CONTACT

NAME: Andy Williams

TITLE: Account Manager

SECTION 2: PRODUCT TITLE

Product Name: Kofta Kebab Seasoning

Product code: 18281

Issue Date: 04.04.12

Version Number: 01

Reason For Issue: New Product

Weight: 2.5kg

Physical Properties

Appearance: A sandy brown mix with parsley & mint, flecked with spices

Aroma: Savoury mint & aromatic spices

Flavour: Savoury mint with aromatic cumin, coriander and white pepper

SECTION 3: PRODUCT LEGAL DESCRIPTOR

Kofta Kebab Seasoning

SECTION 4: LEGAL REQUIREMENTS

HEALTH MARK: NA

QUID REQUIREMENTS: No

COUNTRY OF ORIGIN: UK

PACK WEIGHT: 2.5Kg

AVERAGE WEIGHT: 2.5Kg

Document ID	Version No:	Issue Date	Approved By	Page Number
QMS 2.32	10	10/08/11	C.Joynson	Page 1 of 8

F:\apps\admin\toplevel\general documents\tech\newqms09\level 4 working documents

Controlled document if printed on blue paper



Manchester Rusk Company Ltd
Flava House
Beta Court
Harper Road
Sharston
Manchester M22 4XR
Tel: 0161 945 3579

SECTION 5: HAZARD WARNINGS

Contains: Wheat, Gluten

This product is made in a factory that also uses Soya, Milk, Egg, Celery, Mustard, Sulphur Dioxide and although allergen controls are in place the product may still contain traces of these allergens due to processing constraints

No Nuts, Crustaceans/Molluscs or Fish are used on site

SECTION 6: INGREDIENT DECLARATION

Breadcrumb (Wheatflour, Salt, Yeast), Starch, Salt, Spices (Cumin, White Pepper, Coriander, Black Pepper, Clove), Dried Garlic, Dried Onion, Yeast Extract (Yeast Extract, Salt), Herbs (Parsley, Mint), Natural Garlic Flavouring, Antioxidant (Sodium Ascorbate), Natural Spearmint Flavouring.

Ingredients	% Wt Range	Country of Origin
Breadcrumb (Wheatflour, Salt, Yeast)	<53	UK
Starch (Maize)	<13	Germany, Spain, Netherlands
Salt	<12	UK
Spices (Cumin, White Pepper, Coriander, Black Pepper, Clove)	<8	Syria, Iran, India, Indonesia, Eastern Europe, North Africa, Canada, Vietnam, Comoro Islands
Dried Garlic	<8	China
Dried Onion	<3	China
Yeast Extract (Yeast Extract, Salt)	<3	France, Japan, China
Herbs (Parsley, Mint)	<3	UK, Egypt
Natural Garlic Flavouring	<1	Holland, Sudan, Mexico, UK
Antioxidant (Sodium Ascorbate)	<1	China
Natural Spearmint Flavouring	<0.5	Egypt
Rapeseed Oil (Processing Aid)	<1	UK, France, Holland
Additive	E Number	Function in product
Sodium Ascorbate	E301	Antioxidant

Comments:

MRC are members of Valid IT

Document ID	Version No:	Issue Date	Approved By	Page Number
QMS 2.32	10	10/08/11	C.Joyson	Page 2 of 8

F:\apps\admin\toplevel\general documents\tech\newqms09\level 4 working documents

Controlled document if printed on blue paper



Manchester Rusk Company Ltd
Flava House
Beta Court
Harper Road
Sharston
Manchester M22 4XR
Tel: 0161 945 3579

SECTION 7: NUTRITIONAL INFORMATION

Typical Values per 100g

Energy (kJ)	1197kJ
Energy (kcal)	308kcal
Protein	10.3g
Carbohydrate	65.4g
of which sugars	0.4g
Fat	2.2g
of which saturates	0.1g
Fibre	3.2g
Salt	13.0g
Sodium	5.1g

Comments: As calculated by Nutricalc

SECTION 8: SHELF LIFE

AMBIENT: 12 Months

CHILLED: NA

FROZEN: NA

SECTION 9: FREE FROM DATA

CONTAINS:	PRESENT (Y/N)	COMMENTS
Additives	Y	E301
Artificial Flavourings	N	
Natural Flavourings	Y	
Preservatives	N	
Artificial Preservatives	N	
Natural Colours	N	
Artificial Colours	N	
MSG	N	
BHT/BHA	N	
Sweeteners	N	
Hydrolysed Vegetable Protein	N	
Wheat & Wheat Derivatives	Y	Breadcrumb
Rye/Oats/Barley/Spelt/Kamut	N	
Maize & Maize Derivatives	Y	Starch
Soya & Soya Derivatives	N	
Genetically Modified Ingredients	N	
Nuts & Peanuts	N	

Document ID	Version No:	Issue Date	Approved By	Page Number
QMS 2.32	10	10/08/11	C.Johnson	Page 3 of 8

F:\apps\admin\toplevel\general documents\tech\newqms09\level 4 working documents

Controlled document if printed on blue paper



Manchester Rusk Company Ltd
 Flava House
 Beta Court
 Harper Road
 Sharston
 Manchester M22 4XR
 Tel: 0161 945 3579

Nut & Peanut Derivatives excl. Oil	N	
Nut & Peanut Oil	N	
Sesame Seeds	N	
Seed Derivatives excl. Oil	N	
Seed Oil	Y	Rapeseed Oil (Processing Aid)
Pine Nuts / Kernels	N	
Yeast	Y	Yeast Extract, Breadcrumb
Mustard / Mustard Seeds / Mustard Derivatives	N	
Celery / Celeriac	N	
Kiwi Fruit	N	
Milk and Milk Derivatives	N	
Molluscs	N	
Lupin	N	
Sulphur Dioxide/Sulphites (ppm)	N	
Animal Products: Dairy	N	
Animal Products: Eggs	N	
Animal Products: Shellfish	N	
Animal Products: Fish (Other)	N	
Animal Products: Beef & Derivatives	N	
Animal Products: Pork	N	
Animal Products: Lamb	N	
Animal products: Poultry	N	
Animal products: Other	N	
SUITABLE FOR:		
Vegetarians	Y	
Vegans	Y	
Coeliacs	N	Breadcrumb
Lactose Intolerant	Y	

SECTION 10: MICROBIOLOGICAL STANDARDS

TEST	MAXIMUM
TVC	< 100,000 cfu/g
YEAST & MOULDS	< 1000 cfu/g
ENTEROBACTERIACEAE	< 100 cfu/g

Document ID	Version No:	Issue Date	Approved By	Page Number
QMS 2.32	10	10/08/11	C.Joyson	Page 4 of 8

F:\apps\admin\toplevel\general documents\tech\newqms09\level 4 working documents

Controlled document if printed on blue paper



Manchester Rusk Company Ltd
Flava House
Beta Court
Harper Road
Sharston
Manchester M22 4XR
Tel: 0161 945 3579

<i>ESHERICHIA COLI</i>	< 10 cfu/g
<i>SALMONELLA</i>	Absent in 25g
<i>STAPH AUREUS</i>	< 20 cfu/g
<i>BACILLUS CEREUS</i>	< 100 cfu/g

SECTION 11: DIRECTIONS FOR USE

1kg of meat, 94g of seasoning and 140ml of water (optional).

SECTION 12: STORAGE INSTRUCTIONS

Ambient storage in a cool, dry place in the packaging specified

SECTION 13: ANALYTICAL DATA

Nitrate content:	<1PPM
Taste Test	As Specification Parameters
Appearance & Odour	As Specification Parameters
Sieve Test	Sieve intact

SECTION 14: QUALITY PARAMETERS

PARAMETER	MIN	MAX
Batch ingredient weights	As per batching record	NA
Sensory Analysis	Per batch	NA

Document ID	Version No:	Issue Date	Approved By	Page Number
QMS 2.32	10	10/08/11	C.Joyson	Page 5 of 8

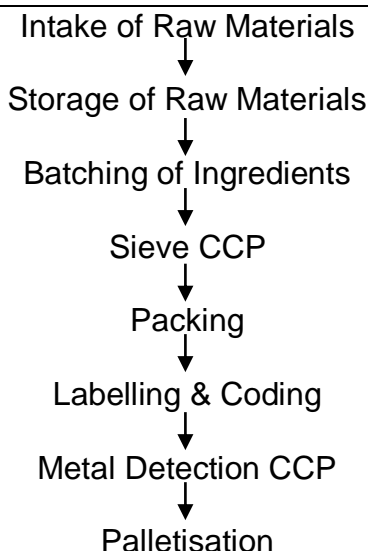
F:\apps\admin\toplevel\general documents\tech\newqms09\level 4 working documents

Controlled document if printed on blue paper



Manchester Rusk Company Ltd
 Flava House
 Beta Court
 Harper Road
 Sharston
 Manchester M22 4XR
 Tel: 0161 945 3579

SECTION 15: PROCESS FLOW



SECTION 16: QUALITY CHECKS

CHECK	FREQUENCY	PARAMETERS
Weights Coding	Per Tub Start of run & every 30 minutes	Fill weights to specification Clear, legible, correct
Seal	Start of run & every 30 minutes	Intact & clean
Metal Detection	Start and end of run	1.5mm Fe, 2mm Non Fe, 2.5mm SS

SECTION 17: PACKAGING STANDARDS

Inner Packaging Description: Blue polythene Laminate

Inner Barcode: NA

Outer Packaging Description: 2.5kg High density polyethylene tub with low density lid and packed in Corrugated Cardboard Case.

Outer Barcode: NA

Coding Details:

(day) (month) (year) (batch)

(Day) is denoted by the first 2 numbers

(Month) is denoted by the second 2 numbers

(Year) is denoted by the last number of year

(Batch) is denoted by the number of the actual batch on the production day

Document ID	Version No:	Issue Date	Approved By	Page Number
QMS 2.32	10	10/08/11	C.Joynson	Page 6 of 8

F:\apps\admin\toplevel\general documents\tech\newqms09\level 4 working documents

Controlled document if printed on blue paper



Manchester Rusk Company Ltd
Flava House
Beta Court
Harper Road
Sharston
Manchester M22 4XR
Tel: 0161 945 3579

Pallet Details: Wooden Pallet

Cases Per Layer: 8 x 2.5kg x 9 Boxes per layer

Layers Per Pallet: 3

Cases Per Pallet: 27

SECTION 18: HEALTH AND SAFETY DATA

PRODUCT DIGESTED	This product is designed for human consumption, and is safe when used at recommended levels. In the case of excessive ingestion, give patient water to drink and rest. If discomfort persists, seek medical advice
SKIN CONTACT	Normal standard of hygiene and regular washing with water should prevent irritation; avoid prolonged contact with lips and tender parts of the body. Medical attention should be obtained in cases of sensitisation
EYE CONTACT	Avoid contact with eyes. Irrigate immediately with water and seek medical advice if discomfort persists
PRODUCT INHALED	Dust masks should be worn if the product is found to be irritating. In the case of inhalation remove casualty from exposure, rest and keep warm. In severe cases seek medical attention.
SPILLAGE	Sweep up and dispose of with non-hazardous wastes. Small spillages may be washed to drain with cold water. Consult local authorities when disposing of large quantities.
FIRE	Avoid production of dust. Fires should be controlled by water spray, rather than by main jets, to avoid generating explosive dust clouds.
STORAGE PRECAUTIONS	Original sealed containers should be stored in a cool dry place
HANDLING PRECAUTIONS	All MRC products should be used in a well-ventilated area. Operators should observe normal good house keeping precautions. Goggles, gloves and dust masks may be required when exposed to prolonged handling

Document ID	Version No:	Issue Date	Approved By	Page Number
QMS 2.32	10	10/08/11	C.Joynson	Page 7 of 8

F:\apps\admin\toplevel\general documents\tech\newqms09\level 4 working documents

Controlled document if printed on blue paper



Manchester Rusk Company Ltd
 Flava House
 Beta Court
 Harper Road
 Sharston
 Manchester M22 4XR
 Tel: 0161 945 3579

SECTION 19: APPROVAL

FOR MRC

Signed

Position QA Supervisor

Date 04/04/12

FOR CUSTOMER

Signed

Position

Date

The contents of this specification are the sole property of Manchester Rusk Company Ltd, prior written confirmation must be obtained from Manchester Rusk Company Ltd before any information contained within the specification is supplied to a 3rd party.

If a signed copy of the specification is not returned within 6 weeks of the date of the specification, Manchester Rusk Company Ltd will assume implicit acceptance of the specification and its contents.

SECTION 20: LIST OF AMENDMENTS

DATE	ISSUE NUMBER	REASON FOR ISSUE	APPROVED BY
04/04/12	1	New Product	C Joynton

Document ID	Version No:	Issue Date	Approved By	Page Number
QMS 2.32	10	10/08/11	C.Joynton	Page 8 of 8

F:\apps\admin\toplevel\general documents\tech\newqms09\level 4 working documents

Controlled document if printed on blue paper