



Manchester Rusk Company Ltd  
Flava House  
Beta Court  
Harper Road  
Sharston  
Manchester M22 4XR  
Tel: 0161 945 3579

<b>SECTION 1: CONTACT DETAILS</b>	
<b>ADDRESS</b> Manchester Rusk Company Ltd Flava House Beta Court Harper Road Sharston Manchester M22 4XR	<b>TECHNICAL CONTACT</b>  <b>NAME:</b> Julie Fallows  <b>TITLE:</b> Technical Manager
<b>TELEPHONE</b> 0161 945 3579	<b>SALES CONTACT</b>  <b>NAME:</b> Stewart Niven
<b>FAX</b> 0161 946 0299	<b>TITLE:</b> Commercial Controller

<b>SECTION 2: PRODUCT TITLE</b>	
<b>Product Name:</b> Sticky Maple Glaze	
<b>Product code:</b> 15845	
<b>Issue Date:</b> 13.10.10	<b>Version Number: 02</b>
<b>Reason For Issue:</b> Changed smoke flavouring in the Ingredient Declaration	
<b>Weight:</b> 2.5kg or 10kg	
<b>Physical Properties</b>	
<b>Appearance:</b> Golden brown powder with visible parsley.	
<b>Aroma:</b> Sweet with smoky maple and spice notes.	
<b>Flavour:</b> Sweet with smoky maple and spice notes.	

<b>SECTION 3: PRODUCT LEGAL DESCRIPTOR</b>
Sticky Maple Glaze

<b>SECTION 4: LEGAL REQUIREMENTS</b>	
<b>HEALTH MARK:</b> N/A	
<b>QUID REQUIREMENTS:</b> N/A	
<b>COUNTRY OF ORIGIN:</b> UK	
<b>PACK WEIGHT:</b> 2.5kg /10kg	<b>AVERAGE WEIGHT:</b> 2.5kg /10kg

Document ID	Version No:	Issue Date	Approved By	Page Number
QMS 2.32	07	13/10/10	J. Fallows	Page 1 of 8

F:\apps\admin\toplevel\general documents\tech\newqms09\level 4 working documents

Controlled document if printed on blue paper



Manchester Rusk Company Ltd  
 Flava House  
 Beta Court  
 Harper Road  
 Sharston  
 Manchester M22 4XR  
 Tel: 0161 945 3579

**SECTION 5: HAZARD WARNINGS**

**Contains:** Barley, Gluten.

This product is made in a factory that also uses Soya, Egg, Milk, Celery, Mustard and although allergen controls are in place the product may still contain traces of these allergens due to processing constraints

No Nuts, Crustaceans/Molluscs or Fish are used on site

**SECTION 6: INGREDIENT DECLARATION**

Sugar, Starch, Maltodextrin, Salt, Acid (Sodium Diacetate), Dried Tomato (3.5%), Dried Garlic, Dried Onion, Yeast Extract (Yeast Extract, Salt), Thickener (Guar Gum), Smoke Flavouring produced from Hickory, Spices (Coriander, White Pepper), Parsley, Malt Extract (Barley), Citric Acid, Natural Maple Flavouring, Colours (Curcumin, Paprika Extract).

Ingredients	% Wt Range	Country of Origin		
Sugar	<54	France		
Starch (Maize, Waxy Maize)	<9	Germany, Spain, US		
Maltodextrin	<8	France		
Salt	<6	UK		
Acid (Sodium Diacetate)	<4	Canada		
Dried Tomato	<3.5	Morocco		
Dried Garlic	<3.5	China		
Dried Onion	<3	Egypt		
Natural Maple Flavouring	<1	Maple – ACP Countries		
Yeast Extract (Yeast Extract, Salt)	<2	Germany		
Thickener (Guar Gum)	<1.5	India		
Smoke Flavouring produced from Hickory	<1.5	US		
Spices (Coriander, White Pepper)	<1.5	Coriander – Russia White Pepper – Indonesia		
Parsley	<1	UK		
Malt Extract (Barley)	<1	UK		
Citric Acid	<1	Ireland		
Natural Maple Flavouring	<1	ACP Countries		
Colours (Curcumin, Paprika Extract)	<0.5	India		
Silicon Dioxide (Processing Aid)	<0.5	Germany		
Additive	E Number	Function in product		
Sodium Diacetate	E262	Acid		
Guar Gum	E412	Thickener		
Citric Acid	E330	Acid		
Curcumin	E100	Colour		
Paprika Extract	E160c	Colour		
Document ID	Version No:	Issue Date	Approved By	Page Number
QMS 2.32	07	13/10/10	J. Fallows	Page 2 of 8



Manchester Rusk Company Ltd  
 Flava House  
 Beta Court  
 Harper Road  
 Sharston  
 Manchester M22 4XR  
 Tel: 0161 945 3579

Silicon Dioxide	E551	Processing Aid
<b>Comments:</b> MRC are members of Valid IT		

<b>SECTION 7: NUTRITIONAL INFORMATION</b>	
Typical Values per 100g	
Energy (kJ)	1318kJ
Energy (kcal)	324Kcal
Protein	2.2g
Carbohydrate	76.2g
of which sugars	53.9g
Fat	0.5g
of which saturates	0.0g
Fibre	2.4g
Salt	6.4g
Sodium	2.5g
<b>Comments:</b> As calculated by Nutricalc	

<b>SECTION 8: SHELF LIFE</b>
<b>AMBIENT:</b> 12 Months
<b>CHILLED:</b> N/A
<b>FROZEN:</b> N/A

<b>SECTION 9: FREE FROM DATA</b>		
<b>CONTAINS:</b>	<b>PRESENT (Y/N)</b>	<b>COMMENTS</b>
Additives	Yes	Sodium Diacetate E262, Citric Acid E330, Guar Gum E412, Curcumin E100, Paprika Extract E160c, Silicon Dioxide E551.
Artificial Flavourings	No	

Document ID	Version No:	Issue Date	Approved By	Page Number
QMS 2.32	07	13/10/10	J. Fallows	Page 3 of 8



Manchester Rusk Company Ltd  
 Flava House  
 Beta Court  
 Harper Road  
 Sharston  
 Manchester M22 4XR  
 Tel: 0161 945 3579

Natural Flavourings	Yes	Maple Flavouring.		
Preservatives	No			
Artificial Preservatives	No	Curcumin E100, Paprika Extract E160c		
Natural Colours	Yes			
Artificial Colours	No			
MSG	No			
BHT/BHA	No			
Sweeteners	No			
Hydrolysed Vegetable Protein	No			
Wheat & Wheat Derivatives	No			
Rye/Oats/Barley	Yes		Malt Extract Starch, Maltodextrin	
Maize & Maize Derivatives	Yes			
Soya & Soya Derivatives	No	Yeast Extract		
Genetically Modified Ingredients	No			
Nuts & Peanuts	No			
Nut & Peanut Derivatives excl. Oil	No			
Nut & Peanut Oil	No			
Sesame Seeds	No			
Seed Derivatives excl. Oil	No			
Seed Oil	No			
Pine Nuts / Kernels	No			
Yeast	Yes			
Mustard / Mustard Seeds / Mustard Derivatives	No			
Celery / Celeriac	No			
Kiwi Fruit	No			
Milk and Milk Derivatives	No			
Molluscs	No			
Lupin	No			
Animal Products: Dairy	No			
Animal Products: Eggs	No			
Animal Products: Shellfish	No			
Animal Products: Fish (Other)	No			
Animal Products: Beef & Derivatives	No			
Animal Products: Pork	No			
Animal Products: Lamb	No			
Animal products: Poultry	No			
Animal products: Other	No			
<b>SUITABLE FOR:</b>				
Vegetarians	Yes			
Vegans	Yes			
<b>Document ID</b>	<b>Version No:</b>	<b>Issue Date</b>	<b>Approved By</b>	<b>Page Number</b>
QMS 2.32	07	13/10/10	J. Fallows	Page 4 of 8



Manchester Rusk Company Ltd  
 Flava House  
 Beta Court  
 Harper Road  
 Sharston  
 Manchester M22 4XR  
 Tel: 0161 945 3579

Coeliacs	No	Gluten
Lactose Intolerant	Yes	

<b>SECTION 10: MICROBIOLOGICAL STANDARDS</b>	
<b>TEST</b>	<b>MAXIMUM</b>
TVC	< 100,000 cfu/g
<i>YEAST &amp; MOULDS</i>	< 1000 cfu/g
<i>ENTEROBACTERIACEAE</i>	< 100 cfu/g
<i>ESHERICHIA COLI</i>	< 10 cfu/g
<i>SALMONELLA</i>	Absent in 25g
<i>STAPH AUREUS</i>	< 20 cfu/g
<i>BACILLIUS CEREUS</i>	< 100 cfu/g

<b>SECTION 11: DIRECTIONS FOR USE</b>
Use at 8 -10% on chosen meat

<b>SECTION 12: STORAGE INSTRUCTIONS</b>
Store in a cool dry place, in the packaging supplied

<b>SECTION 13: ANALYTICAL DATA</b>	
Nitrate content:	<1PPM
Taste Test	As Specification Parameters
Appearance & Odour	As Specification Parameters
Sieve Test	Sieve intact

<b>SECTION 14: QUALITY PARAMETERS</b>		
<b>PARAMETER</b>	<b>MIN</b>	<b>MAX</b>
Batch ingredient weights	As per batching record	NA

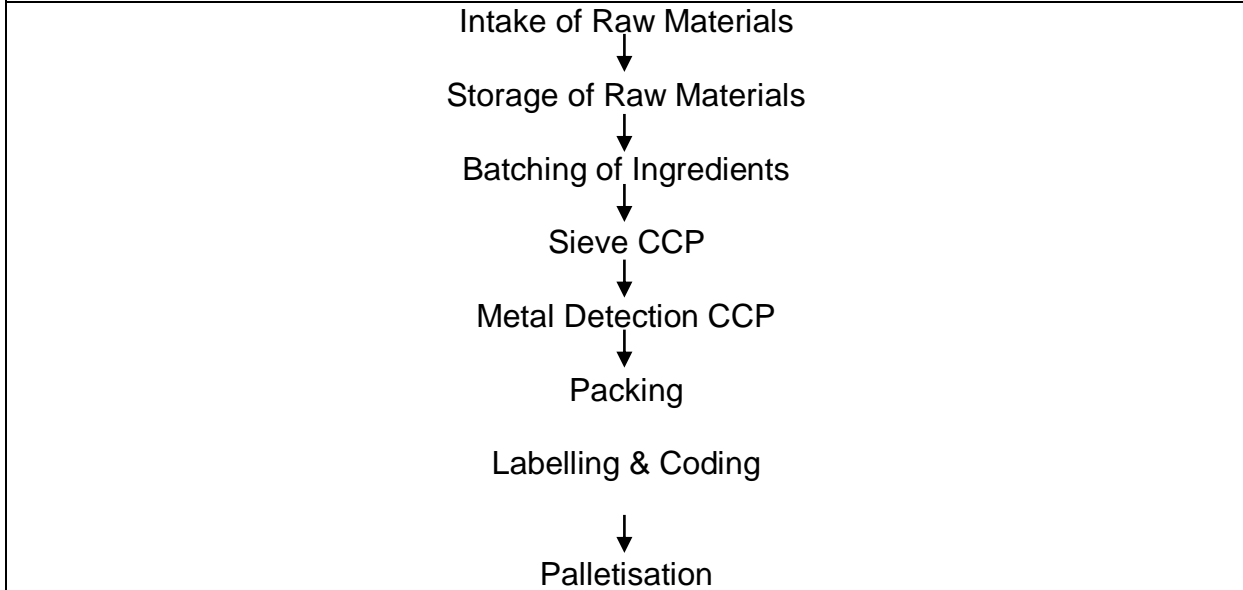
Document ID	Version No:	Issue Date	Approved By	Page Number
QMS 2.32	07	13/10/10	J. Fallows	Page 5 of 8



Manchester Rusk Company Ltd  
 Flava House  
 Beta Court  
 Harper Road  
 Sharston  
 Manchester M22 4XR  
 Tel: 0161 945 3579

Sensory Analysis	Per batch	NA
------------------	-----------	----

**SECTION 15: PROCESS FLOW**



**SECTION 16: QUALITY CHECKS**

CHECK	FREQUENCY	PARAMETERS
Weights Coding Seal Metal Detection	Per Tub/Pail Start of run & every 30 minutes Start of run & every 30 minutes Start and end of run	Per Tub/Pail Clear, legible, correct Intact & clean <u>2.5 kg</u> 1.5mm Fe, 2mm Non Fe, 2.5mm SS <u>10kg</u> 4mm Fe, 5mm Non Fe, 6mm SS

**SECTION 17: PACKAGING STANDARDS**

**Inner Packaging Description:** 2.5kg - Clear sealed polythene laminate or Blue Food Grade Plastic Bag.

**Inner Barcode:** N/A

Document ID	Version No:	Issue Date	Approved By	Page Number
QMS 2.32	07	13/10/10	J. Fallows	Page 6 of 8

F:\apps\admin\toplevel\general documents\tech\newqms09\level 4 working documents

Controlled document if printed on blue paper



Manchester Rusk Company Ltd  
 Flava House  
 Beta Court  
 Harper Road  
 Sharston  
 Manchester M22 4XR  
 Tel: 0161 945 3579

<p><b>Outer Packaging Description:</b> 2.5kg High density polyethylene tub with low density lid and packed in Corrugated Cardboard Case. 10kg – Plastic Pails.  <b>Outer Barcode:</b> N/A  <b>Coding Details:</b>  <b>(day) (month) (year) (batch)</b>          (Day) is denoted by the first 2 numbers          (Month) is denoted by the second 2 numbers          (Year) is denoted by the last number of year          (Batch) is denoted by the number of the actual batch on the production day</p>
<p><b>Pallet Details:</b> Wooden Pallet</p> <p><b>Cases Per Layer:</b> 2.5kg = 8 x 2.5kg x 9 Boxes per layer / 10kg = 11 per Layer</p> <p><b>Layers Per Pallet:</b> 2.5kg/10kg = 3</p> <p><b>Cases Per Pallet:</b> 2.5kg = 27/10kg = 33</p>

<b>SECTION 18: HEALTH AND SAFETY DATA</b>	
<b>PRODUCT DIGESTED</b>	This product is designed for human consumption, and is safe when used at recommended levels. In the case of excessive ingestion, give patient water to drink and rest. If discomfort persists, seek medical advice
<b>SKIN CONTACT</b>	Normal standard of hygiene and regular washing with water should prevent irritation; avoid prolonged contact with lips and tender parts of the body. Medical attention should be obtained in cases of sensitisation
<b>EYE CONTACT</b>	Avoid contact with eyes. Irrigate immediately with water and seek medical advice if discomfort persists
<b>PRODUCT INHALED</b>	Dust masks should be worn if the product is found to be irritating. In the case of inhalation remove casualty from exposure, rest and keep warm. In severe cases seek medical attention.
<b>SPILLAGE</b>	Sweep up and dispose of with non-hazardous wastes. Small spillages may be washed to drain with cold water. Consult local authorities when disposing of large quantities.
<b>FIRE</b>	Avoid production of dust. Fires should be controlled by water spray, rather than by main jets, to avoid generating explosive dust clouds.

Document ID	Version No:	Issue Date	Approved By	Page Number
QMS 2.32	07	13/10/10	J. Fallows	Page 7 of 8


F:\apps\admin\toplevel\general documents\tech\newqms09\level 4 working documents

Controlled document if printed on blue paper



Manchester Rusk Company Ltd  
 Flava House  
 Beta Court  
 Harper Road  
 Sharston  
 Manchester M22 4XR  
 Tel: 0161 945 3579

<b>STORAGE PRECAUTIONS</b>	Original sealed containers should be stored in a cool dry place
<b>HANDLING PRECAUTIONS</b>	All MRC products should be used in a well-ventilated area. Operators should observe normal good house keeping precautions. Goggles, gloves and dust masks may be required when exposed to prolonged handling

<b>SECTION 19: APPROVAL</b>	
<b>FOR MRC</b>	<b>FOR CUSTOMER</b>
 <b>Signed</b> <b>Position QA Supervisor</b> <b>Date 13.10.10</b>	<b>Signed</b> <b>Position</b> <b>Date</b>

The contents of this specification are the sole property of Manchester Rusk Company Ltd, prior written confirmation must be obtained from Manchester Rusk Company Ltd before any information contained within the specification is supplied to a 3<sup>rd</sup> party.

If a signed copy of the specification is not returned within 6 weeks of the date of the specification, Manchester Rusk Company Ltd will assume implicit acceptance of the specification and its contents.

<b>SECTION 20: LIST OF AMENDMENTS</b>			
<b>DATE</b>	<b>ISSUE NUMBER</b>	<b>REASON FOR ISSUE</b>	<b>APPROVED BY</b>
17.05.10	01	New Product	C.Joynton
13.10.10	02	Changed smoke flavouring in the Ingredient Declaration	C.Joynton

<b>Document ID</b>	<b>Version No:</b>	<b>Issue Date</b>	<b>Approved By</b>	<b>Page Number</b>
QMS 2.32	07	13/10/10	J. Fallows	Page 8 of 8

F:\apps\admin\toplevel\general documents\tech\newqms09\level 4 working documents

Controlled document if printed on blue paper